

B2B file exchange has become an essential part of daily business. Especially bulk data transfers over large distances can become a crucial part in time critical workflows.

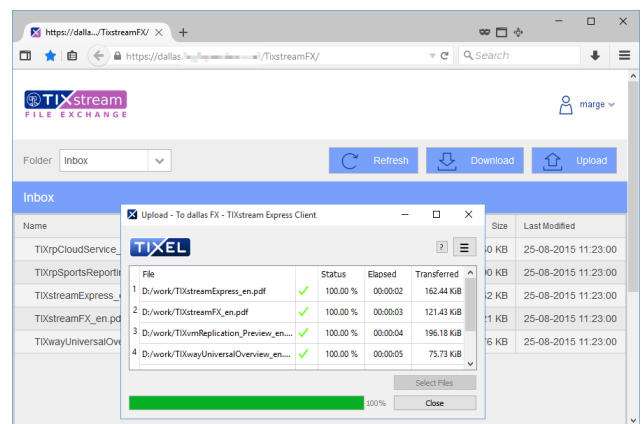
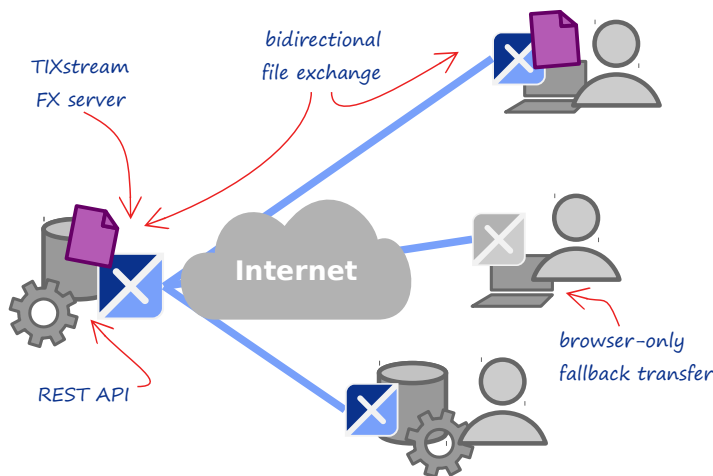
TIXstream FX is TIXEL's light-weight turn key solution for high performance file exchange., focused on ultimate user experience. It allows you to optimize your file-based workflows using standard web technology and TIXEL's bullet proof

transfer acceleration engine. It is easy to setup and delivers maximum transfer speed.

Entirely running in-house you keep full control over your data and avoid unnecessary extra copy operations.

TIXstream FX closes the gap between 3rd party file sharing services and full-blown managed file transfer suites.

<p>Seamless Integration</p> <p>Easy configuration allows smooth integration in your workflows</p>	<p>Great User Experience</p> <p>Clear web interface for regular and spontaneous up- and downloads</p>	<p>High Performance</p> <p>TIXstream Express transfers at maximum speed</p>
--	--	--



HOW IT WORKS

As a scalable solution TIXstream FX perfectly grows with evolving requirements. It smoothly fits into TIXEL's ecosystem or runs as a stand-alone turn-key solution.

- TIXstream FX is setup and operated by your IT staff - in your on-premise or cloud data center
- You define who may upload and/or download files
- B2B partners log in to your TIXstream FX portal with any standard web browser
- Files are directly uploaded to (and downloaded from) your server boosted by TIXstream Express (TXE)

WHAT THE USERS GETS

- Clear user interface for one-click transfers
- Rock solid file transfers with TXE client, seamlessly triggered by the web portal
- Works with any standard web browser on Windows, Mac and Linux; as a fallback also without TXE client

BENEFITS

- Accelerates and secures transfers on the public Internet, leased lines, MPLS and satellite links
- Content agnostic full speed transfer (no compression)
- Ultimate speed from the first bit (no caching)
- Easily customizable, including meta-data editing